

# SOLTAIRE LOW HEADROOM

FOR TIMBER SLIDING DOORS UP TO 250kg

## APPLICATIONS

- ▶ Designed to create a modern minimalist finish with all parts concealed.
- ▶ Can reduce the clearance between the track and the top of the door to 2mm.
- ▶ Vertically adjustable sliding door kit for low or restricted headroom applications.
- ▶ Used to maximise door height.
- ▶ Engineered for easy installation.
- ▶ Easily adjusted when installed.

## DOOR SPECIFICATION

For individual door leaves:

	120kg,	180kg	250kg
Maximum leaf weight	3000	3300	3300
Maximum door width (mm)	35-48	35-48	35-48
Door thickness (mm)	Timber	Timber	Timber

## GEAR SPECIFICATION

Kit Codes:	LH120A	LH180A	LH250A
Kit Includes	Channel Bodies x 2, - End cap x 2, - Strap bolt x 2, - Hanger x 2, End stop x 2, - 4mm Allen Key x 1, - Screw pack x 1.		

## EXTRAS

Track Anodised aluminium (25 microns)	120kg	180kg	250kg
2000mm	120/2000	180/2000	250/2000
2500mm	120/2500	180/2500	250/2500
3000mm	120/3000	180/3000	250/3000
4000mm	120/4000	180/4000	250/4000
5000mm	120/5000	180/5000	250/5000
6000mm	120/26000	180/6000	250/6000

Brackets		
Single track		1/SS
120kg Double track		5SS/120
250/180kg Double track		5H/SS

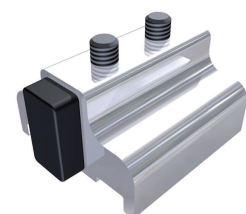
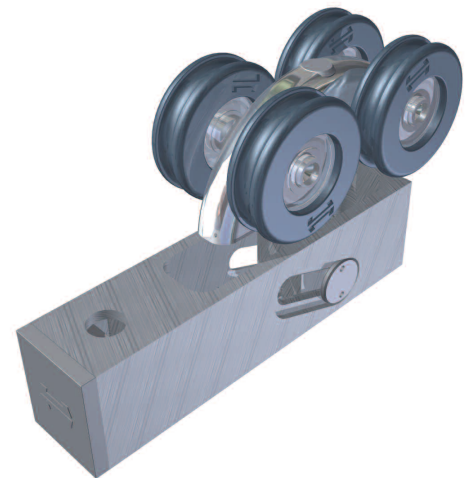
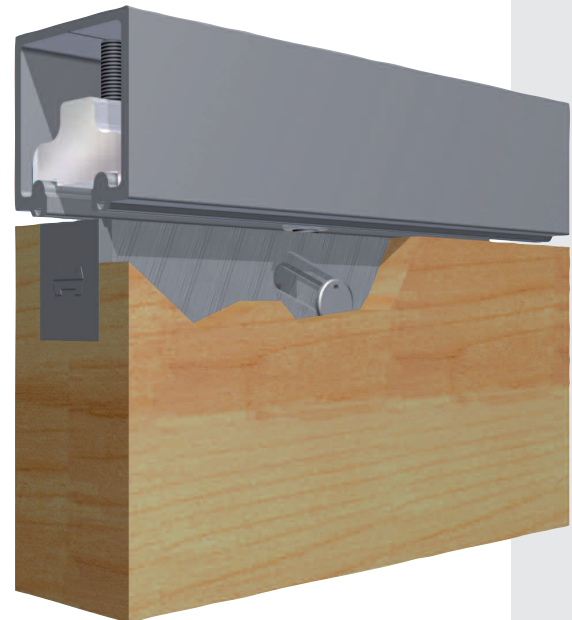
Soffit fix spacing 900mm centres (maximum)

Guides - Timber doors

Concealed fixing with SS bearing	120KG	106SS/94
	250/180KG	106HSS/94
Wall mounted guide		102 SS/94

Channels - Aluminum

2000mm	94X/2000
2500mm	94X/2500
3000mm	94X/3000
4000mm	94X/4000
5000mm	94X/5000
6000mm	94X/6000



Track stop



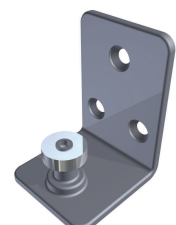
5SS/120 & 5H/SS



106H-SS/94 & 106SS/94

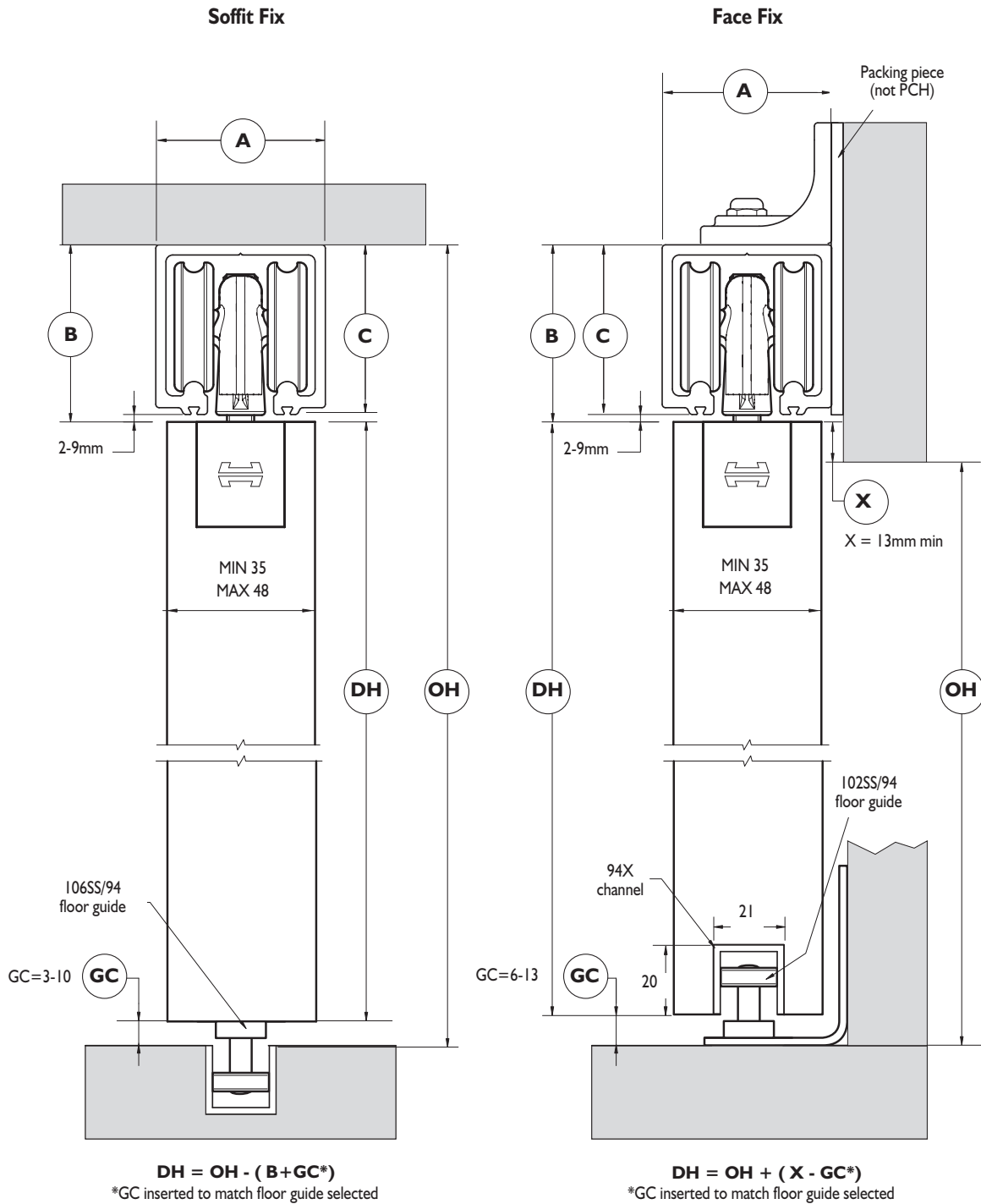


1SS



102SS/94

# SOLTAIRE LOW HEADROOM



	120kg	180kg	250kg
Ⓐ	41	47	50
Ⓑ	33min - 40max	47min - 54max	52min - 59max
Ⓒ	31	45	50

**HENDERSON**

P C Henderson Limited, Durham Road, Bowburn, County Durham DH6 5NG, UK. Web: [www.pchenderson.com](http://www.pchenderson.com)  
 UK Customer Services Department: Tel: +44 (0)191 377 7345 Fax: +44 (0)191 377 3116 Email: [sales@pchenderson.com](mailto:sales@pchenderson.com)  
 Export Department: Tel: +44 (0)191 377 7346 Fax: +44 (0)191 377 0755. Email: [international@pchenderson.com](mailto:international@pchenderson.com).  
 For all technical queries email our Technical Department: [technical@pchenderson.com](mailto:technical@pchenderson.com)