



# Form Series

Door furniture



Outstanding quality, coupled with a wide range of lever styles, exquisitely finished in the rich tones of satin stainless steel, are the key features of the Schlage Form Series. This contemporary lever range has a distinctively European feel. Blending form with function, the Schlage Form Series will allow you to express your individuality with lasting integrity. Beautifully designed down to the last detail, this series is manufactured from high quality stainless steel for high performance, increased durability, good looks and great feel.

The Schlage Form Series has a round rose with a range of solid levers to choose from.

The Schlage Form Series features new QuickFix™ technology, which revolutionises the fixing mechanism for faster door hardware installation.

## Features

- Constructed of quality components with solid stainless steel levers and outer roses (US304 grade)
- Built in privacy push-button for quick installation and ease of use
- The Form Series is suitable for use on approved fire core door assemblies when used with fire rated mortice locks or latches
- Through bolts provide secure fixing, concealed by a round rose cover for aesthetic appeal
- Square outer rose accessory available for all lever profiles
- Features new QuickFix™ technology - install door lever in under 30 seconds after installation of the latch and strike
- All levers are non-handed
- Can be used with Schlage tubular latches, ME series mortice locks or 990 series mortice locks
- Alpha, Costa and Telo levers are AS1428: 1-2009 compliant


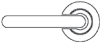





# Specification guide

Series	Function	Lever	Finish
Form ..... 7	Furniture set ..... 0	Albo ..... AL	Satin stainless steel ..... SS
	Passage set ..... 1	Alpha ..... AA	
	Privacy set ..... 2	Angelo ..... AN	
	Dummy trim ..... 3	Carrillo ..... CA	
		Costa ..... CT	
		Kanso ..... KN	
		Marco ..... MA	
		Moretto ..... AMR	
		Picasso ..... PC	
		Stefano ..... SF	
		Telo ..... TE	

- Series**  
Series e.g. Form .....SRL7
- Function**  
Select the desired function e.g. Passage set .....SRL71
- Lever**  
Select the required lever design e.g. Angelo AN .....SRL7IAN
- Finish**  
Select the desired finish e.g. satin stainless steel .....SRL7IANSS

## Specifications

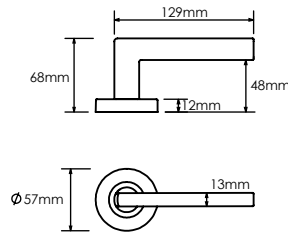
<b>Door type</b>	Timber or metal
<b>Door thickness</b>	Furniture set 30mm to 55mm Passage set 30mm to 50mm Privacy set 30mm to 42mm
<b>Backset</b>	60mm for passage and privacy
<b>Spindle size</b>	7.6mm
<b>Compatible locks/latches</b>	Schlage tubular latches, ME Series mortice locks, 990 Series mortice locks
<b>Fixing</b>	Concealed through fixings
<b>Materials</b>	Solid stainless steel handles, zinc die cast roses
<b>Finish</b>	Satin stainless steel
<b>Warranty</b>	10 year mechanical and finish (when used on residential applications)

Functions	Outside	Inside
<b>Dummy trim</b> Inactive lever which is used as a door pull or matching trim		
<b>Furniture Set (no latch supplied)</b> Two levers to be used with a latch or mortice lock		
<b>Passage set (60mm backset, latch supplied)</b> Both levers always unlocked		
<b>Privacy set (60mm backset, latch supplied)</b> Internal push button to lock outside lever, with emergency release.		

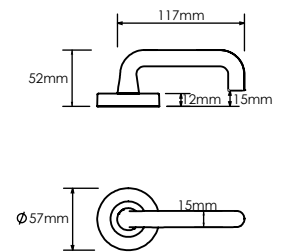
# Form Series lever designs (solid stainless steel)

Note: Square rose cover sold separately

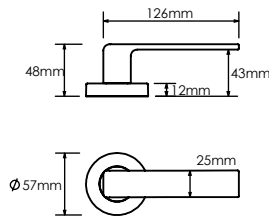
**Albo**



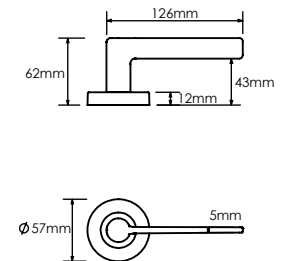
**Alpha**



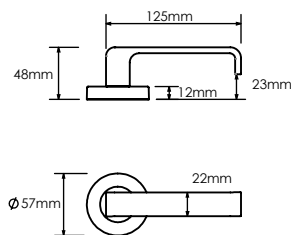
**Angelo**



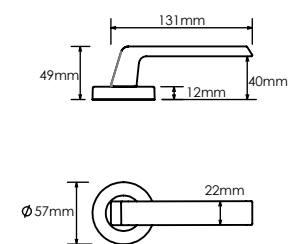
**Carrillo**



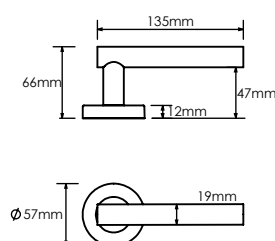
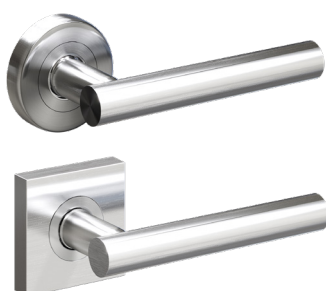
**Costa**



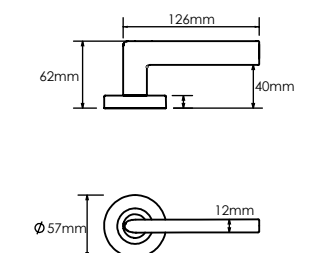
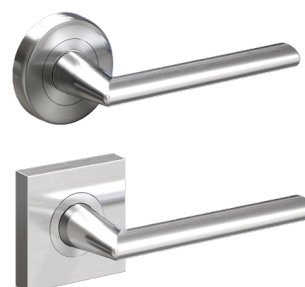
**Kanso**



**Marco**



**Moretto**

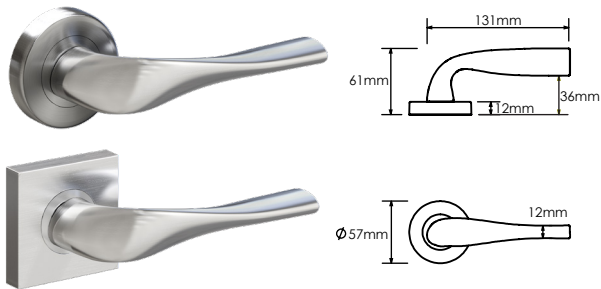


AS1428:1-2009 compliant

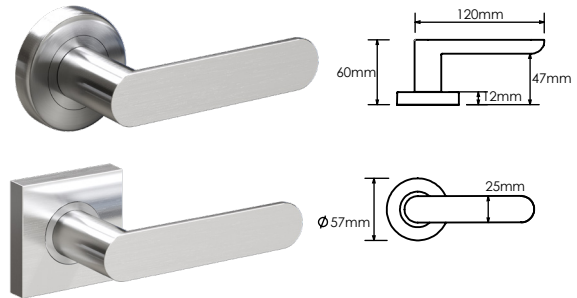
# Form Series lever designs (solid stainless steel)

Note: Square rose cover sold separately

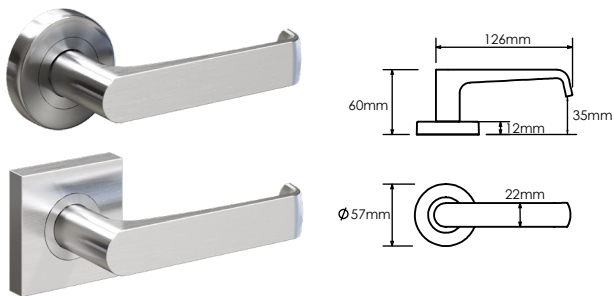
## Picasso



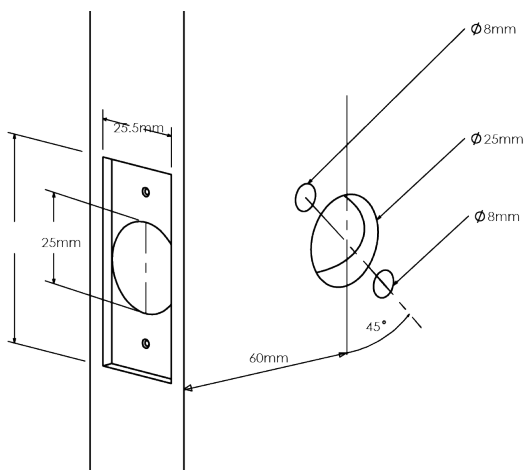
## Stefano



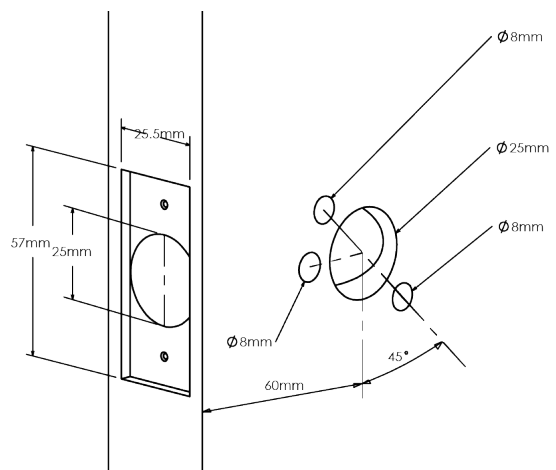
## Telo



## Passage door preparation

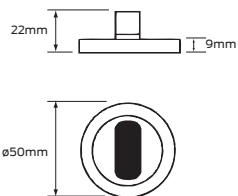


## Privacy door preparation

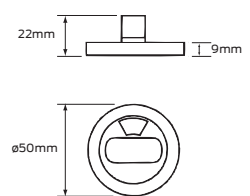


## Form Series escutcheons (solid stainless steel)

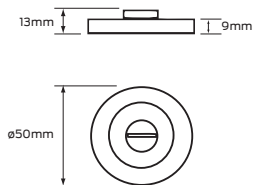
### Turn



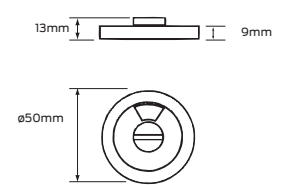
### Indicating turn



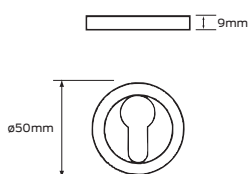
### Emergency release



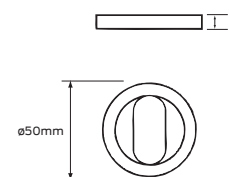
### Indicating emergency release



### Euro profile cylinder

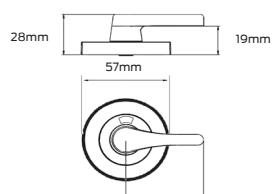


### Oval cylinder

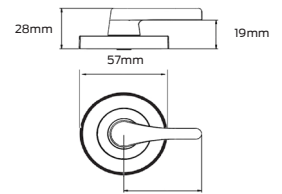


\*Also available in square design

### Indicating accessible turn



### Accessible turn



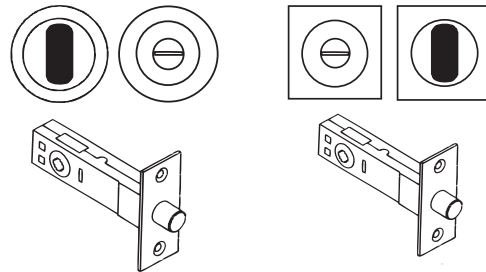
## Form Series escutcheons (stainless steel)

### Escutcheon square rose cover



### Emergency turn set

Turn escutcheon, emergency release escutcheon and deadbolt

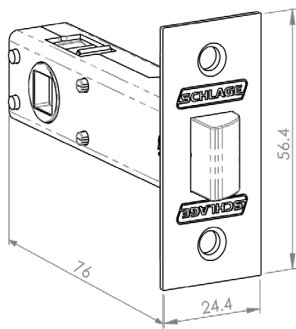


Also available: Euro thumb turn round, indicating large turn, non-indicating large turn, spring latch thumb turn round and spring latch turn set square.

## Form Series accessories

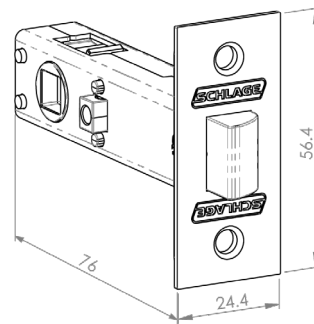
### Passage latch

60mm backset

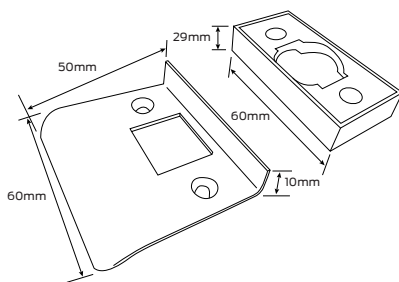


### Privacy latch

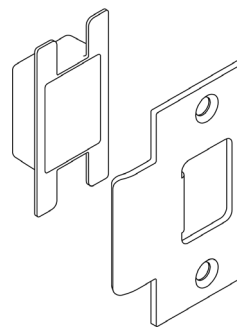
60mm backset



### Universal rebate kit



### T-Strike & Dustbox



### Lever square rose cover

