



Securefold

The ultimate folding door hardware system

Design in motion

August 2013

HENDERSON





Window on the world

Henderson Securefold offers the very best in exterior folding door hardware systems to help you securely open up your home to the outside world.

When it comes to the design and manufacture of folding door hardware systems, we are a global leader. For over 90 years, we have been creating the highest quality products backed by the same high standards of service. That is why the Henderson name is now synonymous with UK design and manufacturing expertise.

Securefold has been designed and tested to over 100,000 cycles by our in-house experts to enable you to open up your exterior walls with confidence and enjoy a true indoor/outdoor experience in your living space. The system operates with effortless ease and combines all the aesthetic benefits of folding timber or aluminium doors with the additional advantages of uncompromising security, weather resistance and durability of stainless steel.

The company is committed to quality and is registered to BS EN ISO 9001: 2000 Quality Systems and Environmental Management Systems ISO 14001: 1996.

As part of this commitment this brochure has been printed on carbon neutral paper in line with the FSC which promotes responsible management of the world's forests. This accreditation guarantees that only the amount of wood which the forest can regenerate naturally is cut down with minimal impact on the environment, wildlife and the indigenous people who reside there.





SECUREFOLD BENEFITS

Securefold and Securefold Ultra offer a wide range of essential benefits, which makes it one of the safest and most convenient folding door solutions on the market.

It looks great - suitable for both timber and aluminium doors, a choice of brushed satin, polished stainless steel, titanium gold and black finishes mean it can complement existing hardware and virtually any colour scheme.

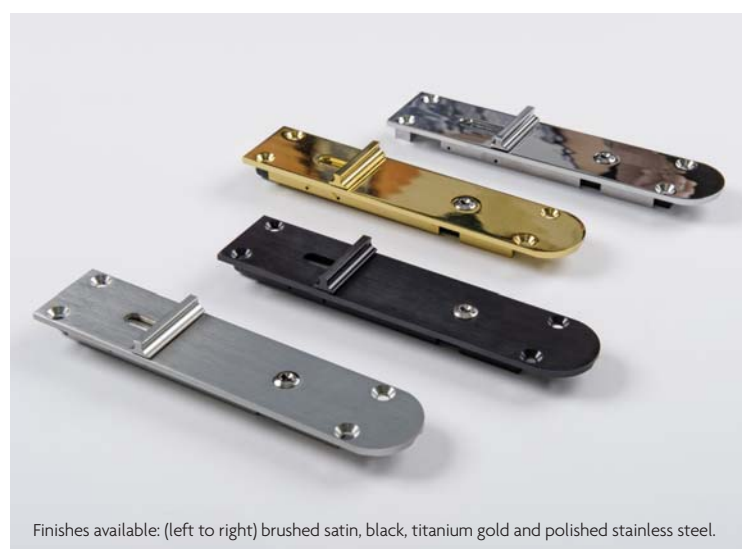
It's durable - with most working parts made from 316 stainless steel, anodised aluminium track and polymers and tested to over 100,000 cycles, it offers an unprecedented working life, even in coastal areas.

It's easy to install - comprehensive instructions are supplied with every pack and our Technical Services Department can help with any query. We can also supply a hinge fitting jig upon request.

It's weather resistant - the system comes in a range of modern and contemporary finishes that provide a high degree of weather and corrosion resistance. The table below highlights the systems test results.

	Air-tightness in PA	Water-tightness in PA	Resistance wind force in PA
Test Results	650	600	+3000/-2550
Norm Classification	EN 12207	EN 12208	EN 12210
Class Achieved	4	94A	4

It's guaranteed - with high quality components and a unique design this system is guaranteed for 10 years.



SECUREFOLD FEATURES AND SYSTEM SPECIFICATION

- High security locking system
- Systems available for timber or aluminium doors
- Suitable for doors weighing up to 45kg and 100kg
- Outstanding weather resistance
- Maximum corrosion resistance
- Inward and outward opening options with a range of opening variations
- Concealed channel to enhance appearance
- Precision bearings top and bottom to allow effortless movement
- Tested to over 100,000 cycles
- Option for surface mounted or morticed hinges (for our range of hinges, please refer to page 15)
- Easy installation

As with all Henderson products, the Securefold range has been designed for maximum performance and ease of installation.

Comprehensive instructions are supplied with every pack and our Technical Services Department have over 80 years combined experience and are on hand to deal with any specification or installation queries.

Whilst Securefold has been built using precision engineering, additional built-in vertical and lateral adjustment mechanisms have been developed to ensure the highest possible finish.





SECUREFOLD SPECIFICATIONS

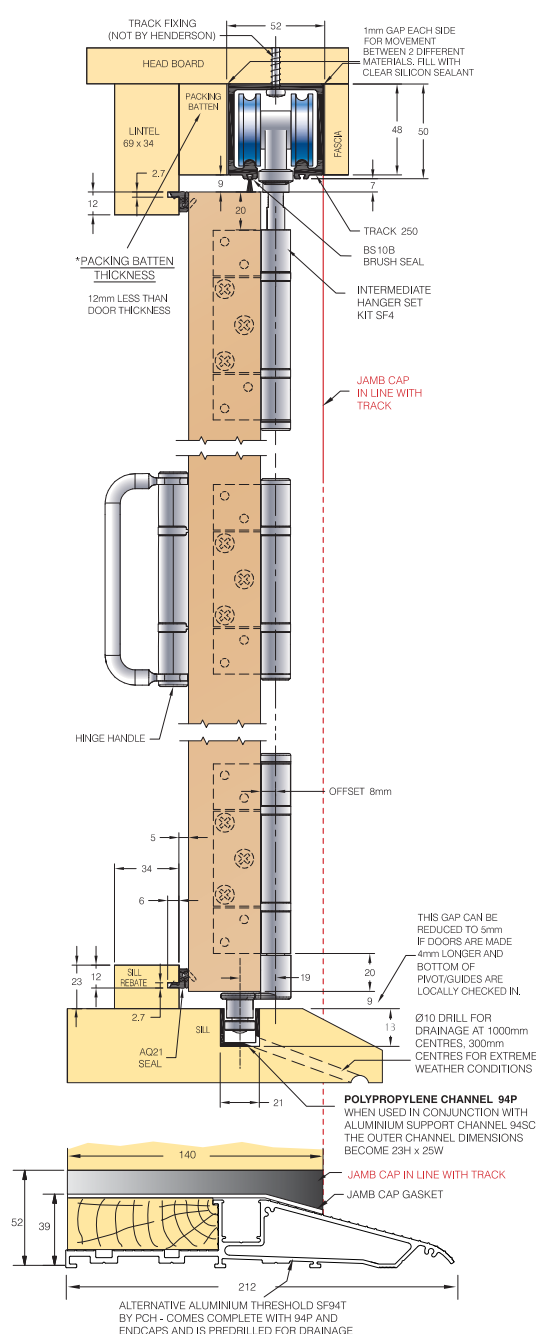
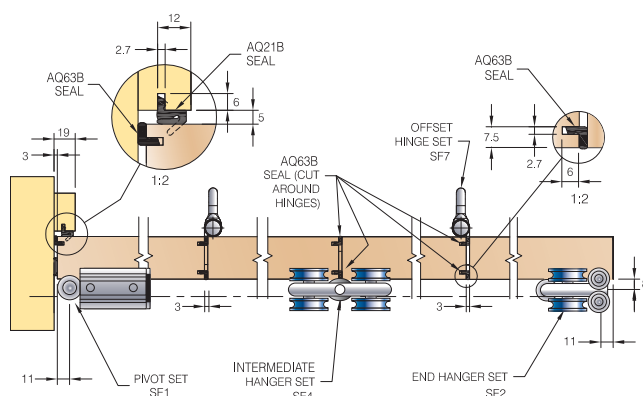
	45kg	100kg
Maximum Leaf Height	3300mm	3300mm
Maximum Leaf Weight	45kg	100kg
Maximum Leaf Width	1000mm	1000mm
Leaf Thickness	35-68mm	36-68mm*

SECUREFOLD ALUMINIUM

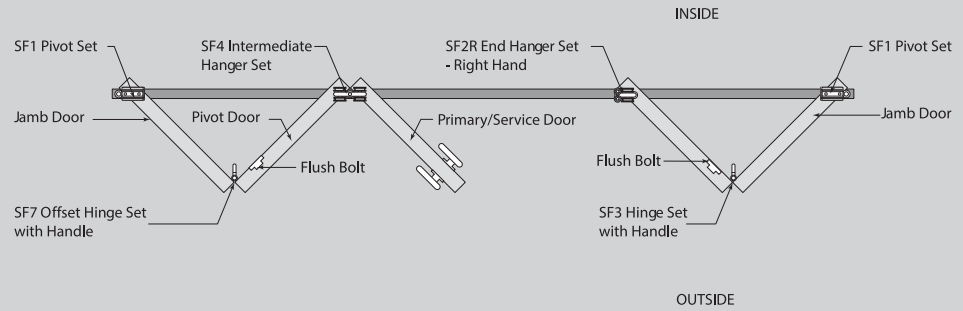
	45kg	100kg
Maximum Leaf Height	3000mm	3000mm
Maximum Leaf Weight	45kg	100kg
Maximum Leaf Width	1000mm	1000mm
Maximum Leaf Thickness	35-68mm	35-68mm*

Securefold Aluminium has been designed for residential and commercial aluminium exterior folding door applications. Two systems are available for doors up to 45kg and 100kg. Both systems are made from stainless steel 316 so they will not corrode and are ideal for coastal installations where the hardware can be more exposed to the elements and salt water.

* For thick and/or narrow width doors please consult the fitting instructions regarding 'camming'. For doors between 35-47mm use an alternative flushbolt. Contact our Technical Customer Services Team for further information.



Hardware application



Inward opening configurations for standard Securefold only

Securefold hardware

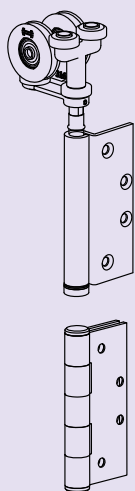
2 LEAF		2 x SF flushbolt, 1 x SF1 pivot set, 1 x SF5 hinge set inward opening, 1 x SF2R end hanger set - right hand.*
2+1 LEAF		1 x YS170, 2 x SF flushbolt, 2 x SF1 pivot set, 1 x SF5 hinge set inward opening, 1 x SF2R end hanger set - right hand.*
3 LEAF		1 x YS170, 2 x SF flushbolt, 1 x SF1 pivot set, 1 x SF6 offset hinge set inward opening, 1 x SF4 intermediate hanger set.
2+2 LEAF		4 x SF flushbolt, 2 x SF1 pivot set, 2 x SF5 hinge set inward opening, 1 x SF8 rebated end hanger meeting.
3+1 LEAF		1 x YS170, 4 x SF flushbolt, 2 x SF1 pivot set, 1 x SF6 offset hinge set inward opening, 1 x SF4 intermediate hanger set.
4 LEAF		1 x YS170, 4 x SF flushbolt, 1 x SF1 pivot set, 2 x SF6 offset hinge set inward opening, 1 x SF4 intermediate hanger set, 1 x SF2R end hanger set - right hand.*
3+2 LEAF		1 x YS170, 4 x SF flushbolt, 2 x SF1 pivot set, 1 x SF4 intermediate hanger set, 1 x SF5 hinge set inward opening, 1 x SF6 offset hinge set inward opening, 1 x SF2L end hanger set - left hand.*
4+1 LEAF		1 x YS170, 4 x SF flushbolt, 2 x SF1 pivot set, 1 x SF4 intermediate hanger set, 2 x SF6 offset hinge set inward opening, 1 x SF2R end hanger set - right hand.*
5 LEAF		4 x SF flushbolt, 1 x SF1 pivot set, 2 x SF4 intermediate hanger set, 1 x SF5 hinge set inward opening, 1 x SF6 offset hinge set inward opening.
3+3 LEAF		1 x YS170, 6 x SF flushbolt, 2 x SF1 pivot set, 2 x SF4 intermediate hanger set, 2 x SF6 offset hinge set inward opening.
4+2 LEAF		6 x SF flushbolt, 2 x SF1 pivot set, 1 x SF4 intermediate hanger set, 1 x SF5 hinge set inward opening, 2 x SF6 offset hinge set inward opening, 1 x SF8 rebated end hanger meeting.
5+1 LEAF		1 x YS170, 6 x SF flushbolt, 2 x SF1 pivot set, 2 x SF4 intermediate hanger set, 1 x SF5 hinge set inward opening, 1 x SF6 offset hinge set inward opening.
6 LEAF		6 x SF flushbolt, 1 x SF1 pivot set, 2 x SF4 intermediate hanger set, 1 x SF5 hinge set inward opening, 2 x SF6 offset hinge set inward opening, 1 x SF2R end hanger set - right hand.*

The configurations shown above are viewed from the inside. They can be reversed, if reversed the parts marked * will have to be the opposite handing e.g. "SF2R end hanger set - right hand" will become "SF2L end hanger set - left hand" and "SF2L end hanger set - left hand" will become "SF2R end hanger set - right hand". The SF8 (rebated end hanger meeting) is illustrated in the split position on each door. Only one kit is required per door meeting point.

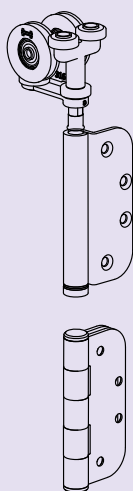
HINGE OPTIONS

P C Henderson offer a choice of four different hinge options in the Securefold range*, this enables us to offer our customers a choice in the look and feel of their project as well as variances on the preferred method of installation and door material.

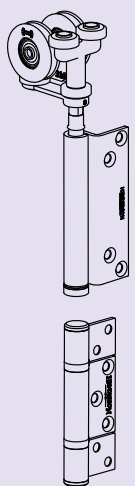
*excludes Securefold Ultra.



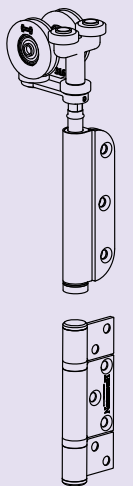
Mortice squared hinge



Mortice radius corner



Non mortice hinge



Standard Securefold hinge

Mortice squared hinge

Square edged hinges provide a rustic feel and look to any wood work application and these are often chosen for more traditional applications. The solid square appearance achieves the look of a timely installation as in the past and historically would have required precision routing by hand. Today there are other methods but some customers still prefer the hand carved qualities of traditional joinery. This hinge option is suitable for use on timber panels between 44-68mm thick and weighing up to 100kg.

Mortice radius corner

Radius cornered hinges offer a softer look and often suit the look and feel of contemporary applications. The smooth round edge complements the trend for minimalistic installation with a clean and modern finish. These hinges lend themselves perfectly to machine routing which aid the routing and fitting process. This hinge option is suitable for use on timber panels between 44-68mm thick and weighing up to 100kg.

Non mortice hinge

A non mortice hinge is an entirely surface mounted system that requires no routing or additional preparation before the fitting process. This is an easy and versatile option of hardware that is suitable for use on both the Securefold Timber and Securefold Aluminum. This option offers versatility and can be used on timber or aluminum panels between 35-68mm thick and weighing up to 100kg.

Standard Securefold hinge

The Securefold Standard hinge option combines morticed end leaf hinges to create a clean finish as it is concealed between the door and the jamb; it then uses the trusted surface mounted intermediate hinges for ease of installation across the remaining door configurations. Because of this, the standard hinge is suitable for all timber door leaves stated (35-68mm thick and weighing up to 100kg) and is a popular option when specifying internal or external folding doors as it features increased security performance.

HENDERSON

P C Henderson Limited

Durham Road, Bowburn,
County Durham DH6 5NG, UK
www.pchenderson.com

UK Technical Customer Services Team

Telephone: 0191 377 7345
Fax: 0191 377 3116
e-mail: sales@pchenderson.com

Export Technical Customer Services Team

Telephone: +44 (0) 191 377 7346
Fax: +44 (0) 191 377 0755
e-mail: international@pchenderson.com

P C Henderson (Ireland) Limited

Westlink Industrial Estate, Kylemore Road,
Dublin 10, Ireland
Telephone: +353 (0) 1 643 6816
Fax: +353 (0) 1 626 0455
e-mail: sales@pchenderson.ie

Henderson Nederland BV

Postbus 258, 5530 AG Bladel, Holland
Tel: +31 (0) 497 33 2020
Fax: +31 (0) 497 33 2029
e-mail: sales@henderson.nl
www.henderson.nl



@PCHendersonLtd

Securefold

August 2013



Certificate Number 10845
ISO 9001
ISO 14001

