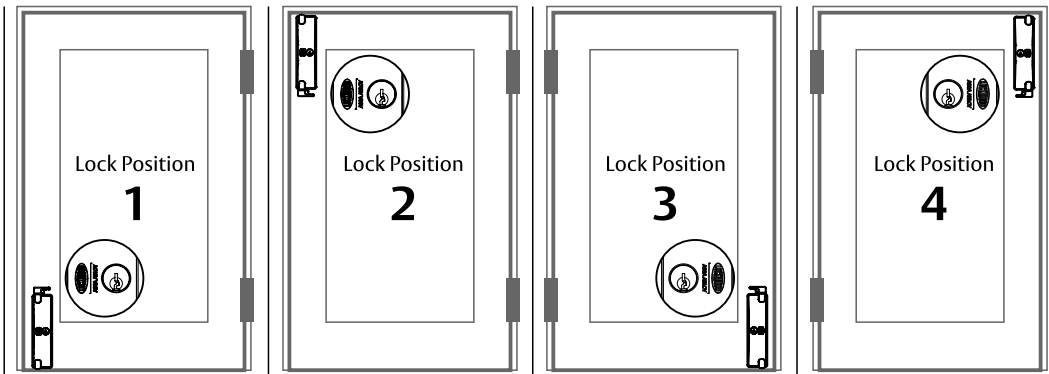


Lock Position



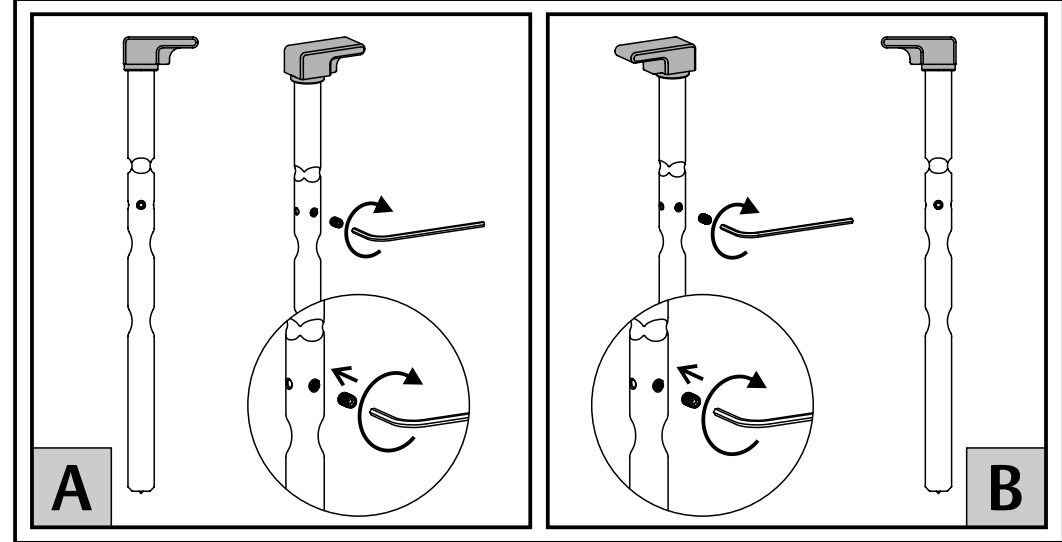
Bolt Stop	A	B	B	A
	C	C	D	D
	F	F	E	E



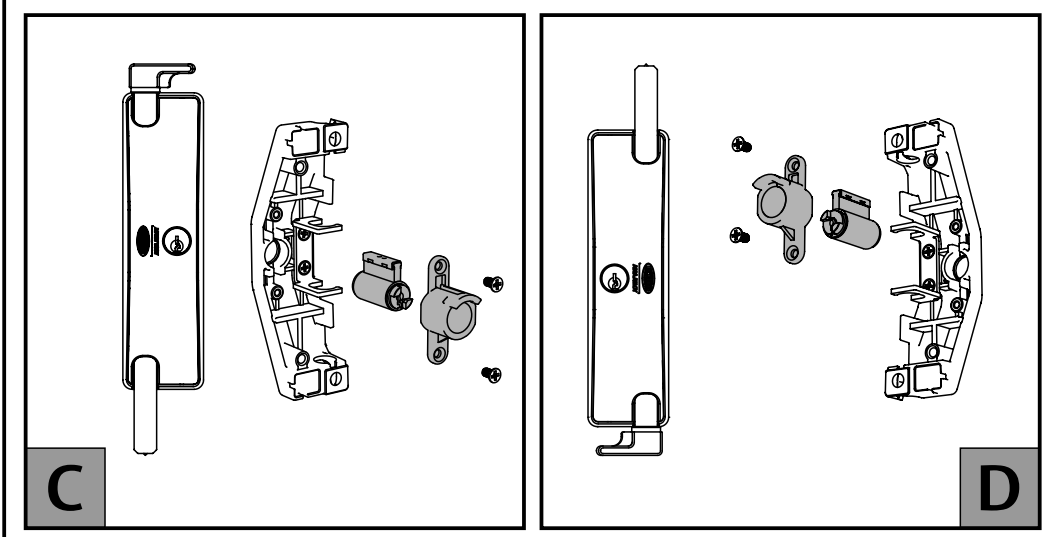
980 Series COMMERCIAL LOCKABLE BOLT

Establish Bolt location on the door
 Configure the Bolt assembly as per the chart.
 Assemble to door in desired method, see overleaf.

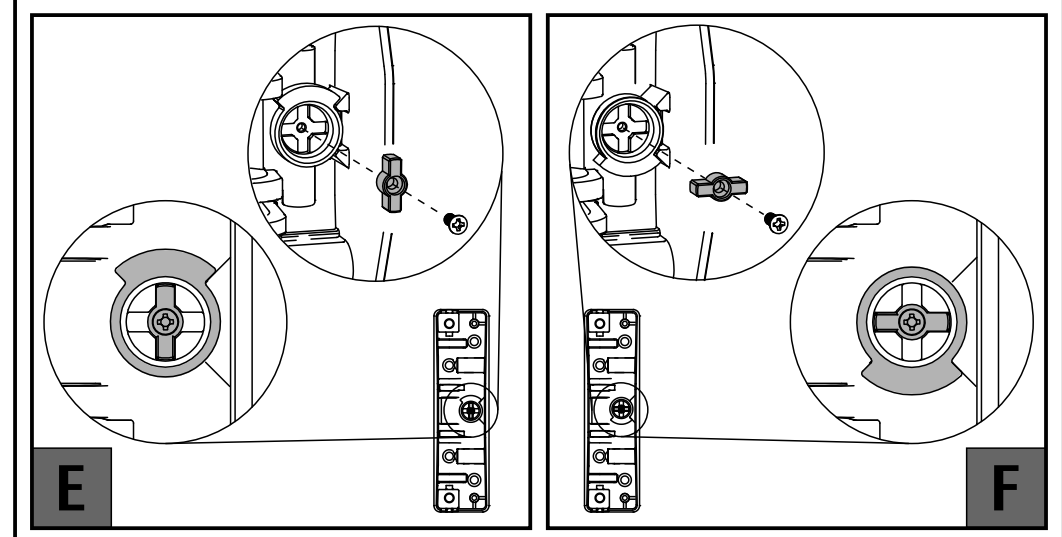
1. Bolt Stop Position



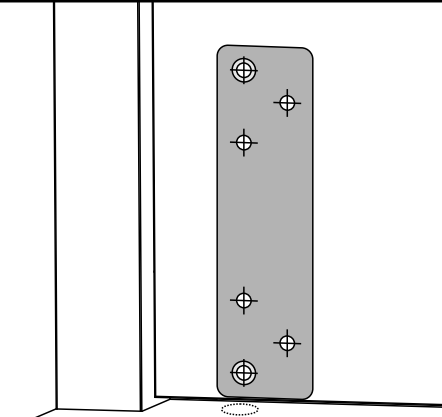
2. Cylinder Orientation



3. Cylinder Cam Position



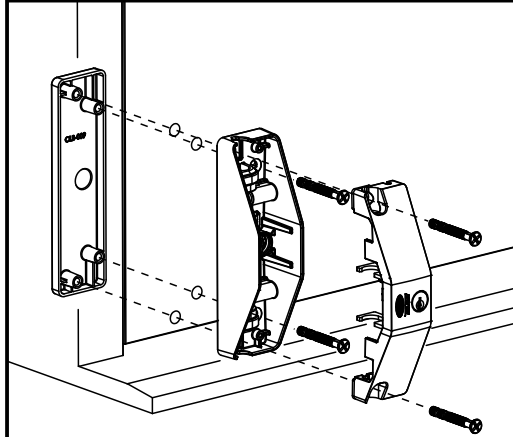
Template



1. Using the Hole Template, drill desired holes into the door. Note symbols represent which holes to drill for each door configuration.



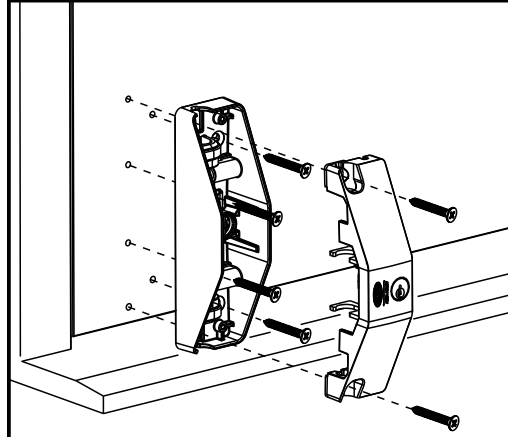
Mounting with External Coverplate



1. Using 4 M6 x 65mm C/Sink bolts, secure the external coverplate as shown.

▲ Drill holes marked with this symbol on template.

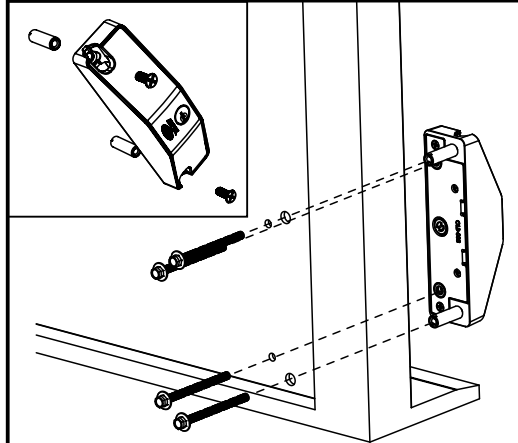
Mounting to Timber Door



1. Using 6 10g x 1.25" wood screws, secure the assembly body to the door as shown.

■ Drill holes marked with this symbol on template.

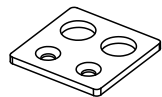
Mounting with Shear-off bolts



1. Secure 2 M6 x 30 Sleeve nuts to the top mounting holes.
2. Using 4 M6 x 75 Shear Off bolts, assemble lock body to the door.

● ★ Drill holes marked with these symbols on template.

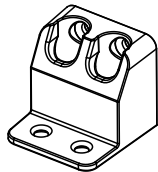
Strike configurations



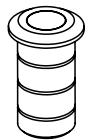
Flat Strike - included in pack.

A variety of strike options are available. Choose the strike that is best suited to your application.

If drilling directly into the floor or door jamb, a Ø13mm hole will be required.

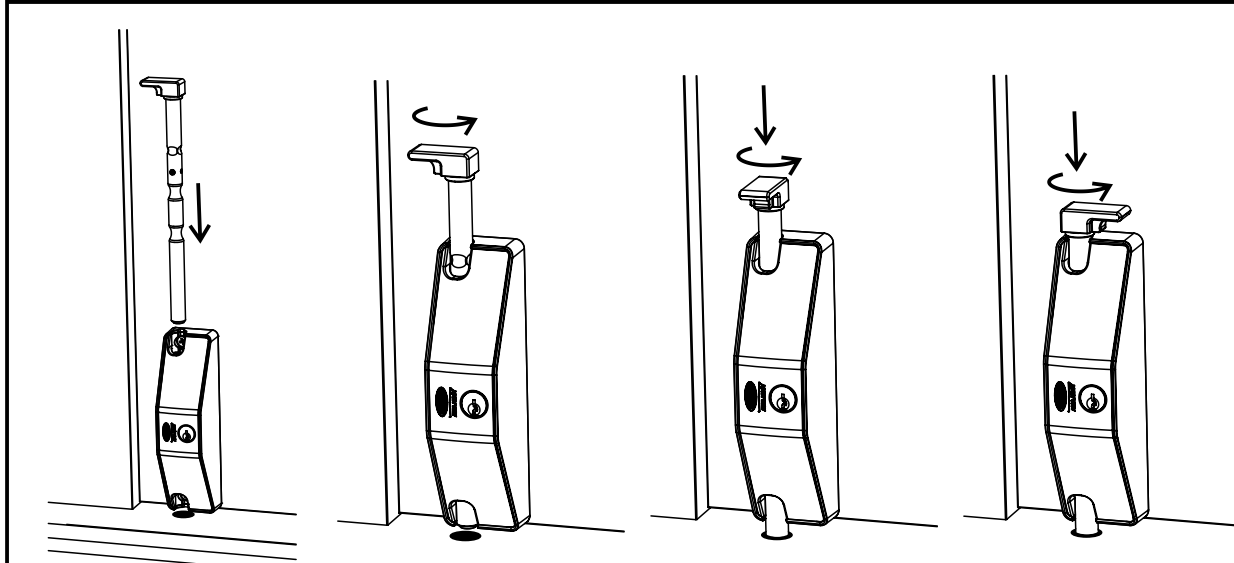


Zinc Strike Box - Spare Part No. SP980-002



Flush Bolt Ferrule - Spare Part No. 840255

Bolt Installation



1. Insert bolt into lock body with the top knob facing away from the cylinder.
2. Push bolt down until it hits the stop.
3. Rotate bolt 90° from the face of the door and continue to push down until fully engaged.
4. In this position insert the key into the cylinder and rotate 90° to lock the bolt.

The bolt can also be locked in the unlocked (bolt up) position.