



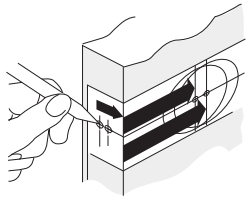
SINGLE AND DOUBLE CYLINDER DEADBOLT

INSTALLATION INSTRUCTIONS

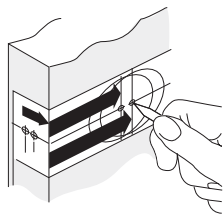
FOR USE ON DOORS 35mm TO 45mm THICK

1. PREPARE DOOR

- Fold and position template at the desired height for the lockset. Mark latch hole position as shown.

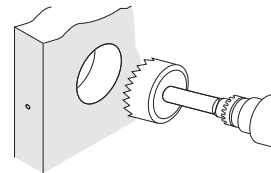


- Mark the centre point of the deadbolt hole on the door face at the desired backset, either 60mm or 70mm.

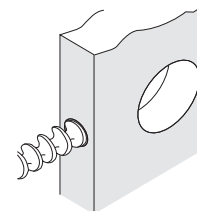


2. DRILL HOLES

- Using a 51mm hole saw, drill through face of door. It is recommended that holes be drilled from both sides to prevent splitting.



- Drill a 25mm hole in the centre of the door edge through to 51mm hole.



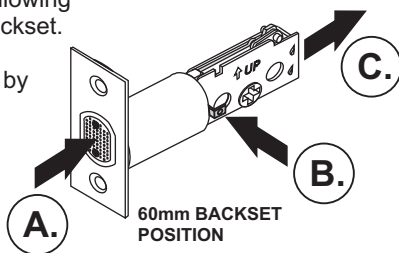
3. PREPARE LATCH

- If required complete the following to adjust latch to 70mm backset.

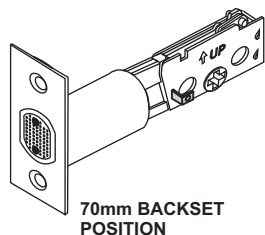
A. Ensure bolt is retracted by placing thumb on it.

B. Depress button on side of latch body.

C. Pull out tail bar drive assembly to 70mm backset position.



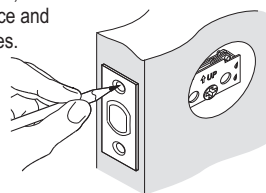
60mm BACKSET POSITION



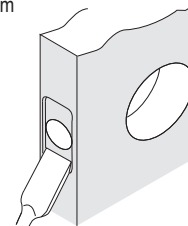
70mm BACKSET POSITION

4. INSTALL LATCH

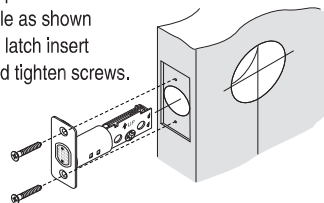
A. Insert latch in hole. Keeping it parallel to door face, mark outline of latch face and screw holes. Remove latch.



B. Chisel 3mm deep or until latch face is flush with door edge.



C. Install deadbolt latch in up position into hole as shown on latch insert and tighten screws.



P/No. YDB-121 Iss. A 1209

FOLD HERE

READ INSTRUCTIONS
45mm THICK
DOOR



35mm
THICK
DOOR

60mm BACKSET

50mm Hole

70mm BACKSET

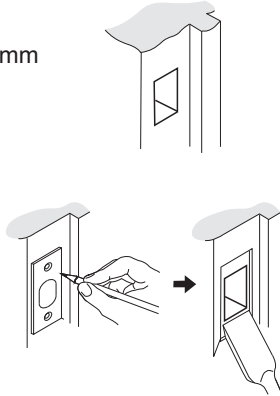
THIS WAY UP



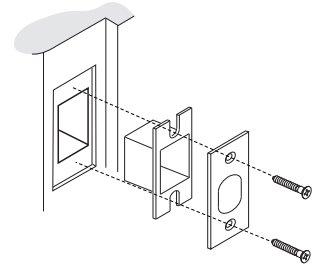
TEMPLATE

5. INSTALL STRIKE

- At the correct height, mortise a 25mm deep rebate 25mm x 30mm in the door jamb.
- Locate the strike using the 25mm rebate in door jamb. Scribe around strike then mortise a 2mm deep rebate for the strike.

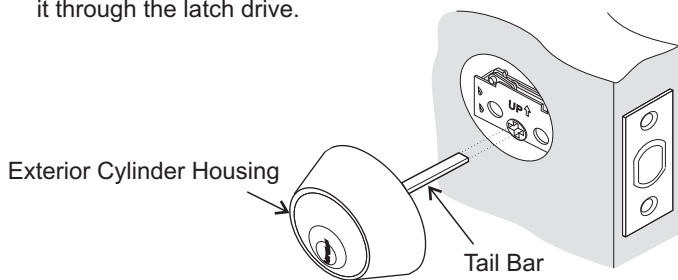


- Insert strike and keeper and secure with two wood screws provided.



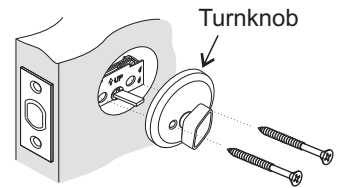
6. INSTALL EXTERIOR MECHANISM

- Position exterior cylinder housing flush against door, ensure the tail bar is **horizontal** when inserting it through the latch drive.

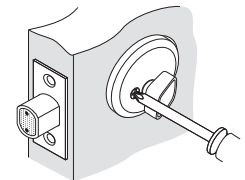


7. INSTALL INTERIOR MECHANISM

- Engage turnknob with tail bar.

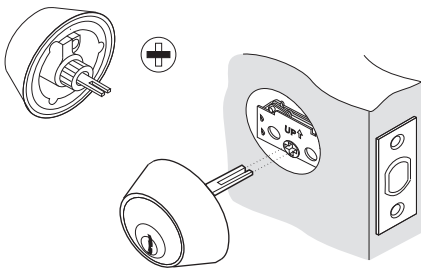


- Secure turnknob to exterior cylinder housing with two long screws supplied.

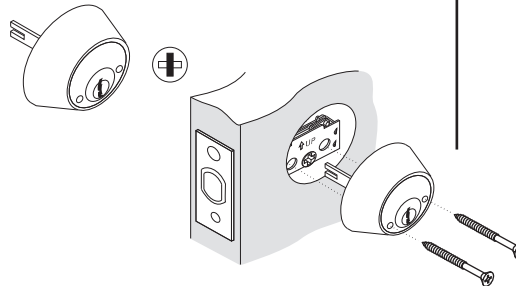


INSTALLATION OF DOUBLE CYLINDER DEADBOLT

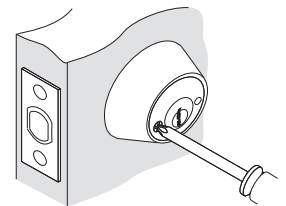
- A.** Position exterior cylinder housing flush against door, ensure the tail bar is **HORIZONTAL** when inserting it through the latch drive.



- B.** With the tail bar in the **VERTICAL** position, engage Interior cylinder housing with the latch drive.



- C.** Secure interior cylinder housing to the exterior cylinder housing with the two long screws supplied.



An ASSA ABLOY Group brand

ASSA ABLOY



YALE GUARANTEE

ASSA ABLOY warrants its YALE branded products against defects in workmanship and materials, subject to the limitations and exclusions set out in this Warranty. If, within the normal working life of a product, it is found to be defective, and none of the limitations and exclusions set out in this Warranty apply, ASSA ABLOY will supply the same or equivalent product free of charge. This is the only remedy granted by ASSA ABLOY under this Warranty.

Limitations

All electrical and electronic components used in ASSA ABLOY's YALE range of products (excluding batteries) are guaranteed for a period of 12 months from the date of proof of purchase, unless stated otherwise.

Exclusions

This Warranty does not cover:

- Damage to or malfunction or failure of the YALE product caused or contributed to by:
 - improper installation or failure to follow fitting instructions;
 - improper maintenance;
 - fair wear and tear;
 - any modification or repair which has not been authorized by ASSA ABLOY;
 - use of substitute or replacement parts or cylinders other than genuine ASSA ABLOY parts or cylinders; or
 - use of batteries other than those specified by ASSA ABLOY.
- The cost of:
 - removal and/or replacement of the YALE product;
 - freight and/or traveling time;
 - replacement batteries; or
 - any modification or repairs to a YALE product, unless authorised by ASSA ABLOY.
- Damage to or deterioration of the plated finishes which are classified as soft finishes, and are subject to deterioration under some environmental conditions.
- Damage caused by corrosion when the Yale product is used in a corrosive environment.
- Personal injury, property damage or economic loss, however caused. This Warranty is in addition to and not in substitution for any rights of the purchaser under individual local legislation where the product is sold.